

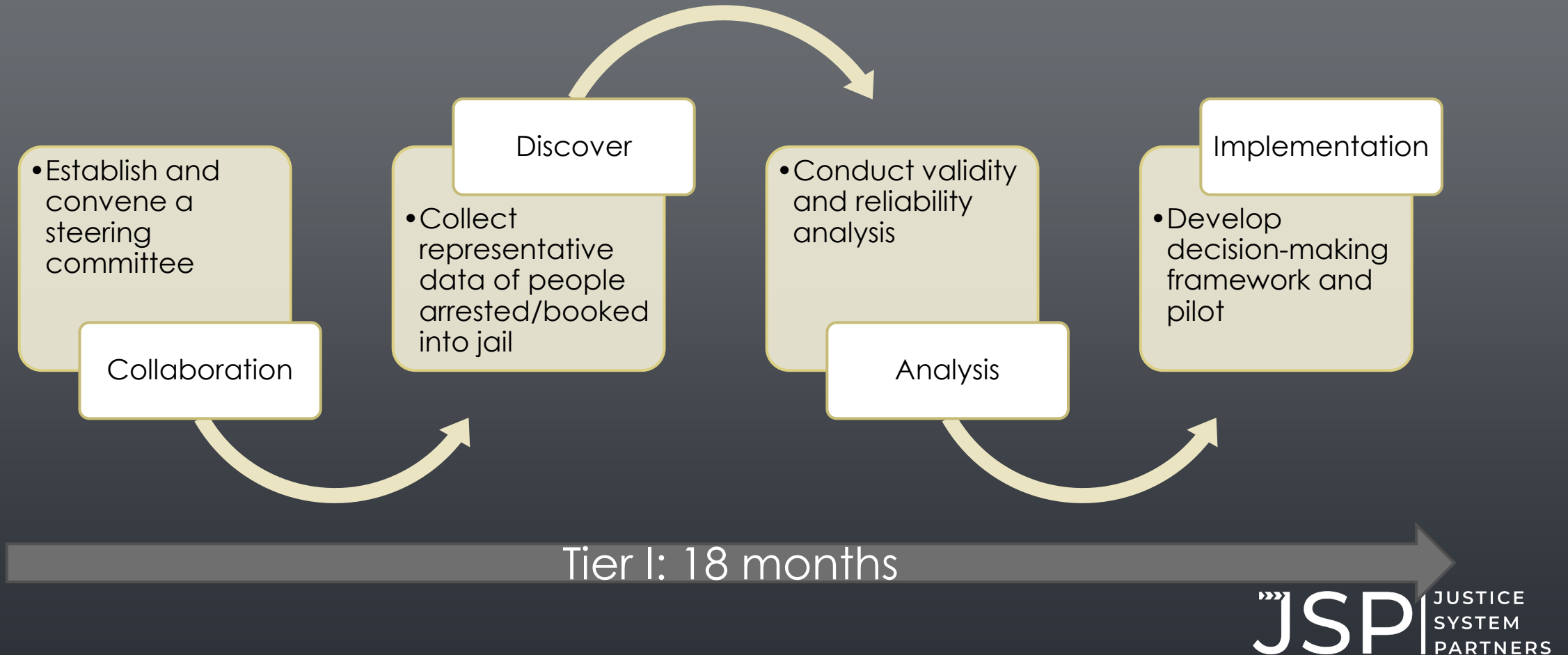
# COLLECTING DATA FOR THE ILLINOIS PRETRIAL ASSESSMENT TOOLS

FEBRUARY 17, 2022

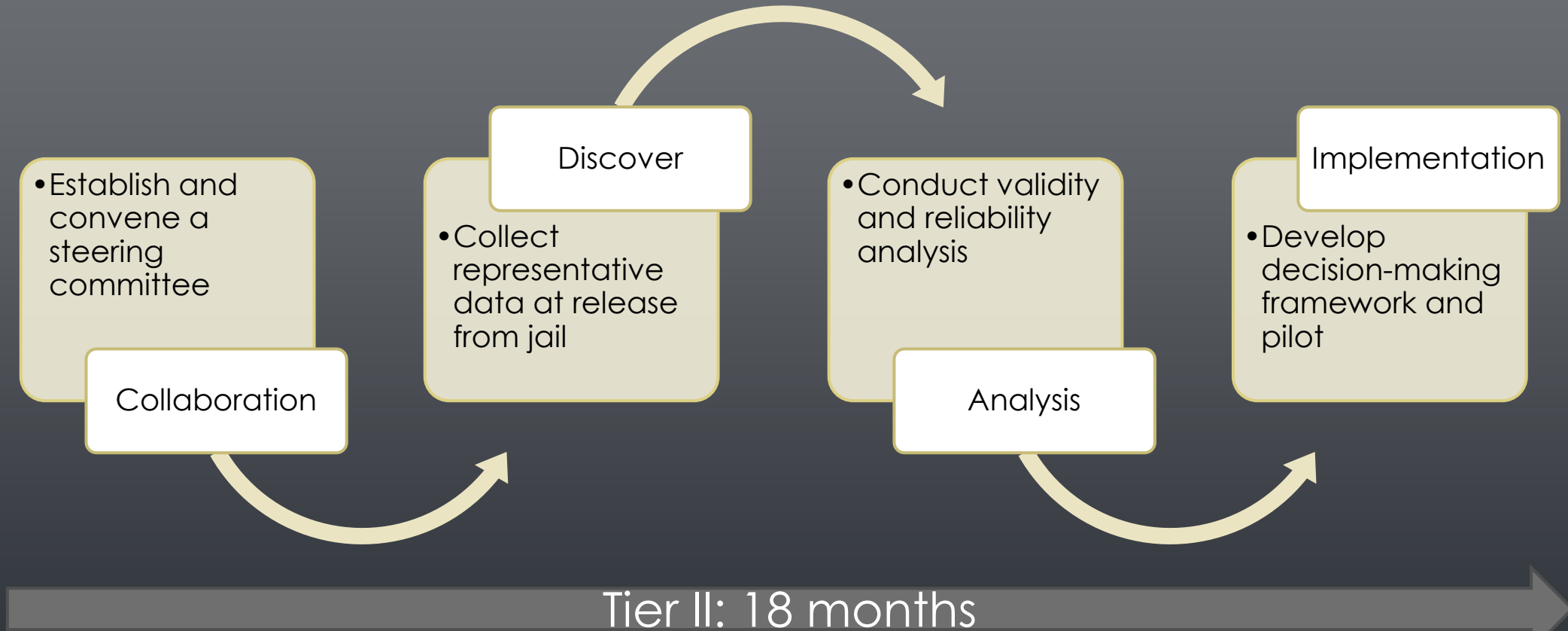
# PURPOSE OF THIS WORK

TO DEVELOP A SET OF ASSESSMENT TOOLS THAT SUPPORT DECISION MAKERS IN IMPROVING EQUITY, FAIRNESS, AND SUCCESS FOR INDIVIDUALS ENGAGED IN THE PRETRIAL PHASE OF THE CRIMINAL JUSTICE SYSTEM

# THE PROCESS AND TIMELINE



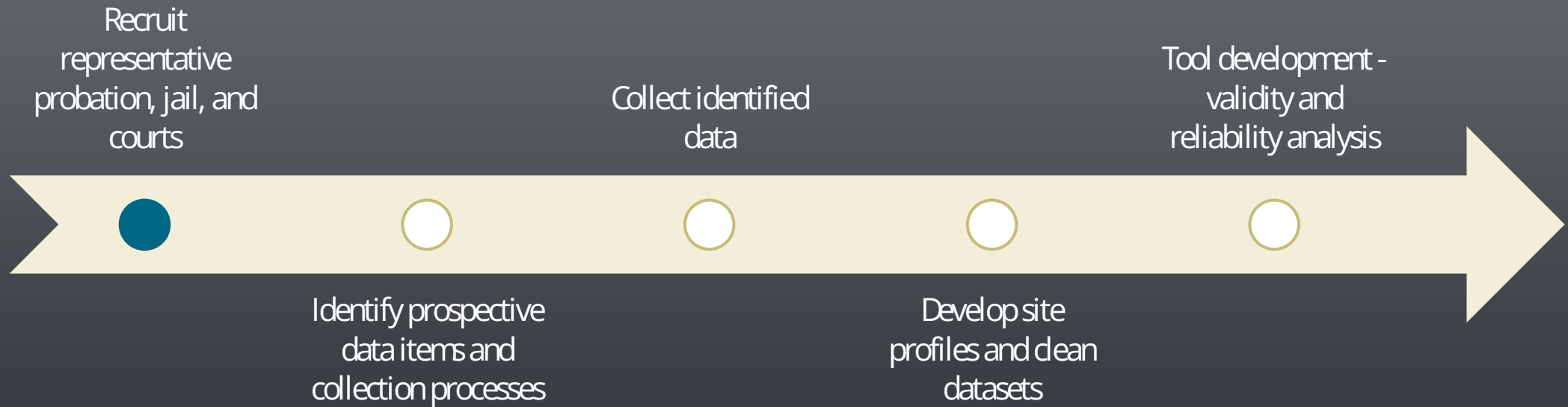
# THE PROCESS AND TIMELINE



# DATA PROCESS – TIER I



# DATA PROCESS – TIER II



# RECRUIT REPRESENTATIVE ORGANIZATIONS

- NEED AS MANY PROBATION AGENCIES, JAILS, AND COURTS AS POSSIBLE.
- WE'LL ASSESS THE REPRESENTATIVENESS OF INITIALLY RECRUITED ORGANIZATIONS AND IF NEEDED DO TARGETED RECRUITMENT BASED ON GAPS IN REPRESENTATION.

# TIER I EXISTING DATA



## Data Needs for Illinois Tier I Pretrial Tool

This document provides an overview of the data needs for the Illinois Tier I Pretrial Tool. The Tier I Pretrial Tool is an administrative tool to help guide decision makers on the front end of the system on the level of success an individual has with minimal support, medium support, and maximum support. Please contact Jen Lerch at [jenlerch@justicesystempartners.org](mailto:jenlerch@justicesystempartners.org) with any questions.

### Who do we need data for?

Individuals who were arrested/booked into jail for your site from January 1, 2016 or January 1, 2018 to July 31 2021. If you are a larger site with more individuals arrested/booked, then going back to 2018 will be sufficient, but smaller sites should try to go back to 2016. If you're unsure what date range you should follow, please contact us.

### What specific data is needed?

**Minimum set of data points:** The data points below are the minimum set of data points needed to represent your site's data when developing the Tier I Pretrial Tool. For the sample drawn from the time periods above, please provide us with all associated information attached to an individual in these areas:

- Name (if necessary to match/identify an individual across multiple files) **and/or** unique identifier (e.g., system assigned such as Tracker ID, county ID)
- Date of birth
- Race and/or ethnicity
- Gender (e.g., man, woman, transgender, non-binary)
- Dates of arrests/bookings
- Charge(s) for arrests/bookings
- Charge severity (felony, misdemeanor) for arrests/bookings
- Dates of releases from jail
- Dates of dispositions for arrests/bookings
- Disposition outcomes for arrests/bookings
- Failure to appear and any details about the reason for the failure to appear

**Additional important data points:** The additional data items below are being requested from your agency. These are important items to creating a valid, representative tool, but we understand that all of these items may not be available from your agency. For the sample drawn from the time periods above, please provide us with all associated information attached to an individual in as many of these areas as possible:

- Sexual orientation (e.g., heterosexual, homosexual, bisexual)
- Medical concerns (e.g., mental health flags, intellectual disabilities, emotional disabilities)
- County of residence (e.g., zip code, county name)
- Domestic violence factors (e.g., relationship between individuals involved, lethality assessments)
- Convictions (e.g., dates, charges, severity)


Who? Individuals who were arrested/booked into jail for your site from January 1, 2016 or January 1, 2018 to July 31 2021.

## What? Minimum data points

- Name **and/or** unique identifier (e.g., system assigned such as Tracker ID, county ID)
- Date of birth
- Race and/or ethnicity
- Gender (e.g., man, woman, transgender, non-binary)
- Dates of arrests/bookings
- Charge(s) for arrests/bookings
- Charge severity (felony, misdemeanor) for arrests/bookings
- Dates of releases from jail
- Dates of dispositions for arrests/bookings
- Disposition outcomes for arrests/bookings
- Failure to appear and any details about the reason for the failure to appear



# TIER I EXISTING DATA



**Data Needs for Illinois Tier I Pretrial Tool**

This document provides an overview of the data needs for the Illinois Tier I Pretrial Tool. The Tier I Pretrial Tool is an administrative tool to help guide decision makers on the front end of the system on the level of success an individual has with minimal support, medium support, and maximum support. Please contact Jen Lerch at [jenlerch@justicesystempartners.org](mailto:jenlerch@justicesystempartners.org) with any questions.

*Who do we need data for?*  
Individuals who were arrested/booked into jail for your site from January 1, 2016 or January 1, 2018 to July 31 2021. If you are a larger site with more individuals arrested/booked, then going back to 2018 will be sufficient, but smaller sites should try to go back to 2016. If you're unsure what date range you should follow, please contact us.

*What specific data is needed?*  
*Minimum set of data points:* The data points below are the minimum set of data points needed to represent your site's data when developing the Tier I Pretrial Tool. For the sample drawn from the time periods above, please provide us with all associated information attached to an individual in these areas:

- Name (if necessary to match/identify an individual across multiple files) and/or unique identifier (e.g., system assigned such as Tracker ID, county ID)
- Date of birth
- Race and/or ethnicity
- Gender (e.g., man, woman, transgender, non-binary)
- Dates of arrests/bookings
- Charge(s) for arrests/bookings
- Charge severity (felony, misdemeanor) for arrests/bookings
- Dates of releases from jail
- Dates of dispositions for arrests/bookings
- Disposition outcomes for arrests/bookings
- Failure to appear and any details about the reason for the failure to appear

*Additional important data points:* The additional data items below are being requested from your agency. These are important items to creating a valid, representative tool, but we understand that all of these items may not be available from your agency. For the sample drawn from the time periods above, please provide us with all associated information attached to an individual in as many of these areas as possible:

- Sexual orientation (e.g., heterosexual, homosexual, bisexual)
- Medical concerns (e.g., mental health flags, intellectual disabilities, emotional disabilities)
- County of residence (e.g., zip code, county name)
- Domestic violence factors (e.g., relationship between individuals involved, lethality assessments)
- Convictions (e.g., dates, charges, severity)

P.O. Box 970, South Easton, MA 02375-0970 | [justicesystempartners.org](https://justicesystempartners.org)

**Organizations?** Any agency that has the data points referenced above (e.g., police, jails, probation, courts).

## How?

- Any format can be used to share the data.
- We can use your secure transfer process or provide you with a secure link.
- We'll happily meet one-on-one with your team to problem solve how you can participate.

**When?** By May 2022

# QUESTIONS FOR YOU?

- WILL YOU NEED TO PAY A VENDOR TO GET YOUR DATA FOR THIS PROJECT? (POLL)
- HOW LONG DOES IT TYPICALLY TAKE TO GET A DATA EXPORT? (CHAT BOX)
- IN WHAT FORMAT CAN YOUR DATA BE EXPORTED? (POLL)
- WHAT BARRIERS TO PROVIDING DATA ARE YOU CONCERNED ABOUT? (CHAT BOX)

# VALIDITY AND RELIABILITY ANALYSIS: DIVERSITY, EQUITY, AND INCLUSION LENS

BUILDING ASSESSMENT ITEMS FROM THE SUBGROUPS UP VERSUS COMPOSITE GROUP DOWN

PEOPLE'S HISTORY OF ARRESTS AND CONVICTIONS IS NOT ONE SIZE FITS ALL

IF IT DOESN'T PREDICT FOR ONE, IT DOESN'T PREDICT FOR ALL DATA DEVELOPMENT MODEL

MEASURING THE OUTCOMES IN SUCCESS VERSUS FAILURE IS IMPORTANT FOR MANY REASONS

HOLDING INDIVIDUALS IN JAIL, FOR EVEN SHORT PERIODS OF TIME, HAVE SIGNIFICANT IMPACTS ON THEIR FUTURE SUCCESS

WHILE ASSESSMENTS ARE NOT PERFECT AND HAVE SOME INHERENT FLAWS, THEY ARE IMPROVEMENTS OVER INDIVIDUAL DECISION MAKERS  
ABILITY TO MEASURE THE LIKELIHOOD OF SUCCESS OR FAILURE

IT IS OFTEN HOW THE ASSESSMENT IS USED THAT CREATES BIAS OR DISPARATE OUTCOMES, THAT CHANGING THE ASSESSMENT WITHOUT  
CHANGING THE PROCESS AND THE PRACTICES HAS LITTLE IMPACT

# DURING AND AFTER DATA COLLECTION

- FEEDBACK AND INPUT FROM LOCAL AND STATE STAKEHOLDERS THROUGH STEERING COMMITTEE AND WORKGROUP ACTIVITIES.

# PARTICIPATION BENEFITS

- REPRESENTATION OF YOUR ORGANIZATION'S DATA IN THE DEVELOPMENT OF THESE TOOLS THAT WILL BE USED ACROSS THE STATE.
- SITE SPECIFIC DATA PROFILE OVERALL, AND BROKEN DOWN BY RACE, GENDER, AGE, AND LGBTQ (IF AVAILABLE).
- CLEAN DATASET FOR YOUR SITE.

# QUESTIONS AND DISCUSSION

IF YOU WANT TO PROVIDE DATA, DIRECT MESSAGE OR EMAIL US YOUR  
NAME, EMAIL, AND AGENCY

# NEXT STEPS

- ESTABLISHING STEERING COMMITTEE MEMBERS AND OPERATIONS WORKGROUP TO HOLD INITIAL MEETINGS.
- JSP AND AOIC CONDUCT TARGETED RECRUITMENT, IF NEEDED.
- WORK ON DATA COLLECTION PROTOCOLS WITH PARTICIPANTS.